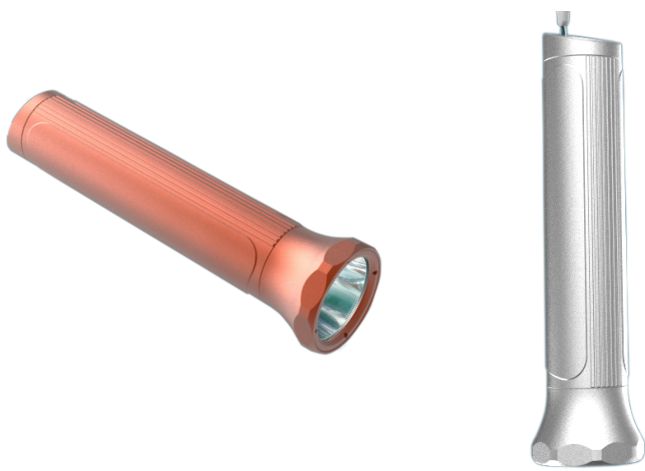


# LED Explosion-proof Lighting

## LED Explosion-proof Torchlight



### Features

- Osram/Philips LED, high lumen output over 140lm/W.
- High-hardness, light aluminum alloy, nice appearance, Strong impact and drop resistance, strong and durable.
- Al metallizing Fool reflector, excellent concentrating performance and luminous efficiency, high brightness and far range.
- Lighting with bright light, worklight, strobe three choices. visual distance reaches 200m
- Super capacity no memory green lithium battery, large capacity, low self-discharge rate, long life span.
- Battery with protection functions of anti-overcharge, anti-over discharge, and short-circuit protection.

### Applications

- Ex ib IIC T5 Gb. For Zone 1 and Zone 2.  
Ex tb IIIC T80°C Db IP68. For Zone 21 and Zone 22.
- Suitable for the emergency lighting, such as field of petroleum, petrochemical, metallurgy, power plant, power network, railways, shipping, public security and fire control.
- Suitable for the emergency lighting, such as the field of outdoor operational site, well repair and power substation. and so on.

IP 68

WF 2

IK 10

140lm/W

+55°C  
-25°C

THD=5%

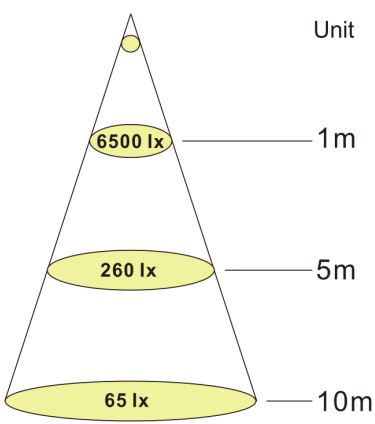
10hrs

### Technical parameters

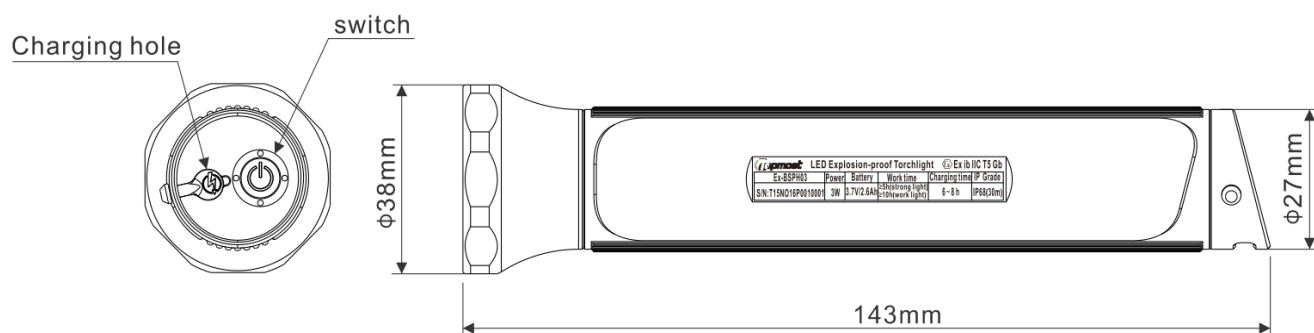
Model	Ex Mark	power	Battery rated voltage	Battery capacity (Ah)	Continuous work time(H)		Charging time(H)	Battery life (cycle)	Central Illumination (Lux)		
					Strong light	Work light			1m	5m	10m
Ex-BSPH03	Ex ib IIC T5 Gb	3W	3.7	2.6	≥5	≥10	6~8h	500	6500	260	65

Model	Ambient temperature(°C)	IP Grade	Anti-corrosion grade	Housing	Front Cover	Size(mm)	Weight(g)	Lifespan	Warranty
Ex-BSPH03	-25~+55	IP68 (30m)	≥WF2	Copper free Aluminium	Tempered glass	Φ38x143	180	≥50000hrs	3 years

### Distribution Curve



### Installation



### Ordering Information

Part number definition as follow:

